



Alpacas NSW

The official electronic magazine of the NSW Region of the AAA Ltd



In this issue:

- Alpaca Nutrition
- Australian Alpaca Weekend
- Handling Farm Chemicals
- Weeds
- Carousel of Colour 2018

Volume 1 Issue 3 - Winter 2018

Publisher

NSW Alpaca Magazine is published by the NSW Region of the Australian Alpaca Association Ltd.

Editor

[Erin Marsden](#)

Telephone: 0408 553 157

Email: alpachateditor@gmail.com

Copyright

All material appearing in NSW Alpacas is subject to copyright. Reproduction in whole or part is not permitted without written permission of the publisher.

Liability

Views expressed by the contributors to the publication, and the advertisements appearing in this publication, are not necessarily endorsed by the AAA.

Every care is taken to compiling the contents of this publication, but the AAA assumes no responsibility for the accuracy of information contained in the text or advertisements.

Contributions are accepted at the sole discretion of the region and the region reserves the right to edit contributions for style and content. No correspondence will be entered into as to why a contribution may have been rejected or edited. In submitting articles for publication contributors accept, acknowledge and agree with these terms.

Contents

Presidents Report	4
Royal Bathurst Show	8
AAFL Collection Day	11
Hawkesbury Show	12
Charles Ledger	13
Weeds	14
Carousel of Colour Show	19
Waratah Alpaca Fibre	21
Upcoming Events	22
Handling Farm Chemicals	23
Pre Shearing Workshop	25
Alpaca Nutrition	26
Australian Alpaca Weekend	30
NSW Stud Sire Directory	32

Cover photo supplied by: Jennie Menzies

"Alpaca Fashion of the Fields".



Alpacas NSW

The official electronic magazine of the NSW Region of the AAA Ltd



In this issue:

- Alpaca Nutrition
- Australian Alpaca Weekend
- Handling Farm Chemicals
- Weeds
- Carousel of Colour 2018

Volume 1 Issue 3 - Winter 2018

Advertisers

Australian Alpaca Yarn	7
Echo Beach	10
Adagio	17
Australian Alpaca Connection	24
Surissimo	36



Now that NSW is one large Region, it is important for us all to stay in contact with each other! So we are requesting that all members provide their correct contact details. (Especially if you have not been receiving correspondence.)

Please contact our NSW Secretary Jennie Menzies.

Ph. 02 6337 7388

Email - rjmenzies@activ8.net.au

Stay connected with the NSW Region:

- Visit our regional website:
www.aaanswalpaca.com.au
- Follow the regional Facebook Page



Advertise with us

To advertise in this newsletter contact Erin Marsden

Telephone: 0408 553 157

Email: alpachateditors@gmail.com

Advertising rates (Inc GST):

- Back Page: \$80 per edition.
- Full page: \$45, \$135 for 4 issues
- Half page: \$30, \$90 for 4 issues
- Quarter Page: \$25, \$75 for 4 issues
- Inserts: \$30
- Business card ads: \$10, \$30 for 4 issues
- Stud Male Listings \$15 are for 4 concurrent editions (12 months)

Above pricing includes assistance in creating your advertisement. An invoice will be sent along with a proof of the proposed advertisement, further adjustments are available, ensuring advertisers are always satisfied when placing an ad in Alpaca's NSW.

Payment can be made by cheque made payable to Australian Alpaca Association Ltd. NSW Region and posted to Janette Law, AAA Ltd. PO Box 1076, Mitcham North VIC 3132, AAA NSW Treasurer, or paid by direct deposit to account name: Australian Alpaca Association Ltd. NSW Region, National Australia Bank BSB 083-004 Account No. 308 133 598 quoting "Invoice No.". Payment is required before your advertisement will be included in the newsletter.





President's Report

Dale Brown

AAA NSW President report for ordinary regional meeting 26/5/2018.

Unfortunately, I could not attend the meeting held at Carousel of Colour this year due to personal commitments, which is a shame as carousel of Colour is certainly one of NSW's largest shows.

Speaking of shows – Since the amalgamation of regions to form NSW, members have been invited to attend 9 halter shows, 3 fleece shows, 4 AAA promotional displays at field days etc, 3 groups activities such as fibre collections, a number of educational events on fibre, skirting and let's not forget another birthing workshop in the next few weeks. In addition to this there has also been 4 youth events targeting the future breeders for our industry. Its great to see such activity and enthusiasm amongst our members. None of these opportunities are available if we don't have people willing to spend what is often a number of hours in all aspects of these events such as organising venues, flights accommodation, setting up and packing up facilities, ensuring that catering is available etc. To the many volunteers involved I say thank you. Your efforts are appreciated and valued.

The next step is to replicate these opportunities around our region. If you think that fleece collections, shows or promotional events have been held too far from you, please have a think about whether you are prepared to assist in organising one nearer to you, can you identify a suitable location etc. We on the NSW committee want to have these activities occur and be replicated around the state, however we can't physically organise all of them, but we can provide advice and assistance to you. Some zones have been holding get togethers to brainstorm events, and for social interaction to that's another idea to consider.

I would like to thank our staff in the national office, Liz Cecil, Joanne Rothe, and Janette Law. I am sure that every NSW member has been assisted by our office staff especially Jo and Janette, whom both have been working in the office for many years. Knowing that someone is always at the end of the phone to provide assistance has been a great reassurance to members. Let's hope that our new staff in Canberra will continue on with the service that we have all come to expect, so on behalf of AAA NSW members I say thank you Liz, Jo and Janette, we will miss you!

Kind regards

Dale Brown

Note from the Animal Health Welfare Officer

Most farms would have enjoyed an extended period, where drenching has been unnecessary, due to dry conditions.

It would be advisable to faecal test, following rain or for those that primarily drench when they consider it necessary, to consider drenching now that the ground is moist.

Most areas have enjoyed some rain lately, drenching for Barbers Pole after a few wet days following an extended dry period may save a stressful and urgent situation, that comes with Barbers Pole burden.

Fluke is hard to diagnose and requires a specific drench, if animals are in very wet paddocks or paddocks that may be affected by swollen creeks or flowing water, then you need to keep this parasite on the radar.

Tape worm can also be an issue following extended dry conditions, in drought there is an increase in wild-life sharing our paddocks looking for food and water, they are renown for bring tape worm with them, please keep this in mind. Keeping a check on dung piles, for tape segments, is the undisputed evidence of tape presence, please check drenches are adequate to treat the parasite you are targeting..

Barbers Pole is included above for good reason.

Apart from the fact that we are having unseasonably warm weather in some areas of our state, a few years ago in the highlands zone, goat, sheep and alpaca breeders were caught out in the July, with a Barber's Pole outbreak, believing they required warmer conditions, (we had even experienced frosts) many animals were lost and the vets were run off their feet.

We witnessed this happen, and a few of our members lost animals.

Parasites are constantly evolving to survive different conditions.

Best practice is always to faecal test before spending money on drenches, most breeders have completed the egg count course and are able to check their herds themselves on a regular basis.

I want to bring the possibility of worm burden to members, so they may investigate and make their own decision as to their need to drench.

Deb Trostian

Animal Health and Welfare AAA NSW Region





Note from the Editor

I hope that you all enjoy this issue there are some great articles which have all been provided by our wonderful members! And remember if there is something you would like to see in the newsletter please send it in!

Thank you also to those members who sent in pictures! I was going to try and thank you all but the list was too long!! But without our wonderful members sending in pictures the newsletter would be pretty boring.

Please remember any articles, pictures, studies, stories and advertising feel free to contact me! Ph. 0408553 157

Email - alpacachateditors@gmail.com

This Newsletter **cannot** continue without the support of the members!! If there are no articles, stories and pictures the newsletter will fail!! So please after your events send something in so everyone can see what we have all been up to!

Also apologies go out to Neil Boyd whose name was misspelt in the last issue.



NSW Committee

President - Dale Brown

Ph:02 6373 8112 cwrnswaaapresident@gmail.com

Vice President - Deb Smith

0412 010 743 info@shangrilahalpacas.com

Secretary - Jennie Menzies

Ph:02 6337 7388 rjmenzies@activ8.net.au

Treasurer - Steve O'Keefe

sokeefe@okeefeaccounting.com.au

Events & Education - Keryn Burns

0400 780 722 aaanswevents@gmail.com

IT & Social Media - Abby Gold

0431 709 771 abby@goldviewalpacas.com.au

Commercialisation & Industry Liaison - Angela Smith

0403 991 612 angela@onetreehillalpacas.com.au

Animal Health Welfare - Deb Trostian

0417 689 197 sanddtrostian@gmail.com

Asset Coordinator - Lionel Tomich

0438 168 681 aaanswassets@gmail.com

Newsletter - Erin Marsden (Editor)

0408 553 157 alpacachateditors@gmail.com

Newsletter - Sue Tiley (Committee Liaison)

0417 462 827 ferntreealpacas@gmail.com

Committee Member - Ray Vella

0411 213 442 raymondvella4@gmail.com



australian **alpaca** yarn

We buy your fleeces

www.australialpacayarn.com.au

See the "Fleece Prices" page for our requirements
to buy your fleece and turn into top quality Australian alpaca yarn.

The current specifications and prices for fleeces are:

WHITE and LIGHT FAWN fleeces		
Micron	Comfort Factor	Price Inc. GST
Under 20	97+%	\$22.00
20 -21.99	95+%	\$22.00
22 – 23.99	90+%	\$17.60
24 – 25.99	85+%	\$13.20
26 -28	75+%	\$8.80

COLOURED fleeces		
Micron	Comfort Factor	Price Inc. GST
Under 20	97+%	\$11.00
20 -21.99	95+%	\$11.00
22 – 23.99	90+%	\$8.80
24 – 25.99	85+%	\$6.60
26 -28	75+%	\$4.40

Tel. 02 62273158 or 0429783575

Email: **sales@alpacaultimate.com**.

Owned and operated by LUALTO Alpacas, Yass, NSW

2018 Royal Bathurst Show

The Royal Bathurst show is over for another year and we had beautiful weather for all three days, fleece set-up, fleece judging and halter classes.

This year we had 145 animal entries with our halter class judge being Amber O'Neill.

There were 81 Fleece entries in the fleece section and our judge was Lyn Dickson. In total 38 different studs were represented in the fleece and halter classes.

A big thank you to our judges for giving of their days to judge the alpaca sections of the show.

Fleece set up and judging were very enjoyable days, and the stewards were supplied with lovely morning and afternoon teas and served a hot lunch by the volunteer Show ladies in the "Red Shelf Café".

This year for the first time, the cleaning before the halter classes was done completely by the Royal Bathurst Show workers.



For those who don't know, the sheep move out of the pavilion on the Saturday afternoon/evening and then the pavilion needs to be cleaned of all straw and every single sheep pellet removed. The cleaning has to be completed to the standard required by Animal Health Australia and signed off by the attending vet. This year a blower was eventually bought into the shed by the show workers and the job done in double quick time, - without any of our alpaca volunteers suffering from the dust and a late night. The vet met me at 6am and thoroughly inspected all areas and signed off on the area as being suitable for use by the alpacas.

This Show was the 150th for Bathurst and as a result all sections were asked to do something special for the show. The Alpaca section held a fancy hat/fascinator competition for the exhibitors...(NOT the alpacas) and it was judged at 11am by our judge, Amber O'Neill together with the newly crowned Miss Royal Bathurst Showgirl 2018. This was a great fun event, providing lots of laughter all round!



A huge thankyou has to go to our wonderful volunteers. Everyone did a fantastic job, and it is very reassuring to know that each job is in capable hands.

Once again, thank you to the judges, the volunteers and exhibitors for a great 2018 show.



Pictures thanks to-

Erin Marsden and Jennie
Menzies

New AAA Office Contact Details

The AAA's Mitcham office has now closed, and the new office in Canberra will be set up on Monday 18 June.

Our new contact details are:

Address: Level 1, 95 Northbourne Avenue, Turner ACT 2612
Postal Address: PO Box 5108, Braddon, ACT 2612
Telephone: 02 6151 2073
General email: info@alpaca.asn.au

For urgent matters during the relocation period, contact Fiona Vanderbeek on 02 4878 9310 or alpacas@birrong.biz

Mail/email/phone calls will all be redirected, so do not be concerned if you have mailed something to the old address.

Interim arrangements

While our new team undergo training and learn their way around our industry we also want to ensure that it is "business as usual" for you, the members. Over the coming weeks, if you have any questions relating to eAlpaca, membership renewals, website access or general queries, please contact Fiona Vanderbeek on 02 4878 9310 or alpacas@birrong.biz.

AAA Board



Echo Beach Alpacas **Fibre Processing Mill**

**Have your fleece processed
into rovings, yarn, batts or felt**

Rovings from \$ 70.00/kg

Yarn from \$ 135.00/kg

please email for complete price list & order form

Anne Marie Harwood mobile: 0417 67 2566
32 Summit Fire Track (off Williams Rd),
Mt Barker Summit SA 5251
PO Box 1600, Mt Barker SA 5251



Email: anne@echobeachalpaca.com.au **Website:** www.echobeachalpaca.com.au

2018 AAFL Collection Orange NSW

The annual alpaca fleece collection day was held again at Quality Wool in Lone Pine Ave Orange on 22 June 2018 starting at 10am and finishing at around 1.15pm. It is held this time of year as it suits Quality Wool staff best and it usually follow a Regional fleece preparation workshop.

I issued 4 new grower numbers prior to and on the day with some members returning to this collection after storing fleece for a few years in sheds and shipping containers.

14 Regional members took part in this fleece pressing day. 1484 kilograms of suri and huacaya fleece was pressed into 9 bales.

Those who attended the day seem to enjoy themselves and worked well together. Lots of laughs and catching up were done while others met for the first time. While it is a bit of work to organise, it is so great to see members working and laughing together around a common goal.

This fleece pressing day would be a much more difficult task to organise and perform without the ongoing support of Quality Wool and their dedicated staff. I say this due to lack of members who have a wool press that can press the wool packs to the minimum transport weight required of 110 kilograms and then transport the bales to the transport depot to go to Victoria. AAFL also assist alpaca fleece growers by paying the transport costs. Members usually see their funds in their nominated bank accounts within 6 weeks.

Neil Boyd



Pictures— Neil Boyd, Erin Marsden

2018 Hawkesbury Show

What a wonderful show we had this year! We had many excited exhibitors and helpers throughout the three days of the show! Angela Pruess was our judge and worked tirelessly for two days judging both fleece and halter classes.

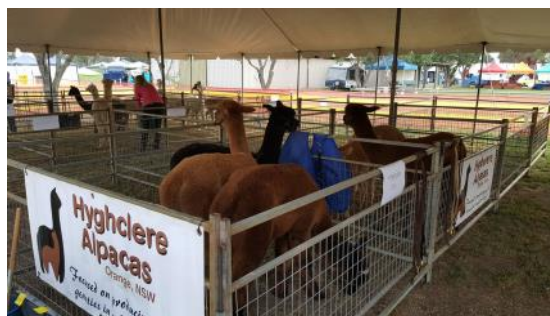


The third day of Hawkesbury show, we held a display and walk an alpaca in conjunction with the Hawkesbury breeders and Cranebrook High school. It was a great opportunity to involve the alpaca youth at Cranebrook High and they had a ball working the walk an alpaca display and educating the public about alpacas. Sue Green was at the helm of our felting display on Sunday, which was very well received by our local community. Many patrons were excited to make their own felted masterpiece!



Our show committee and convener worked tirelessly in the lead up to and on the day of the show and we can happily say that it was a resounding success! Without our show committee the show wouldn't have run as smoothly as it did, so all I can say is a massive thank you to all of you!

A special mention is required to Graeme & Lyn Dickson, Lionel Tomich and Ken Willes who gave much time and support to our new show convenor Sean Timmony. That's a wrap and we're looking forward to seeing you at Hawkesbury show in 2019!! **Pictures**— Emma Timmony, Erin Marsden, Faye Whitfield



CHARLES LEDGER SHOW 2018 - update



The venue this year is the “**Peden Pavilion**” at **Goulburn Showground**.
The Colour Championship Fleece Show will be judged Friday 7th September
and the Age Championship Halter Show 8th & 9th September.
The halter schedule will follow the new format and alternate Huacaya and Suri through both days.
Judges will be: Peter Kennedy- Gane and Adrienne Clarke
The schedules are being prepared and the show should open for entries soon.

Carcass Show

There will be a Carcass Show, this year, supporting the entirety of our industry.
This will be held at Milton Abattoir,
Entries for the Carcass Show will NOT be made through eAlpaca, but through an entry form that will be made available to those wishing to enter.
There will be two sections: 24 months and under, and, over 24 months to 36 months.
No females will be accepted.
There will be no entry fee.
Animals entered will be picked up prior to show day. Following judging carcasses will be donated to charity.
The Judge will be Dr Melanie Smith and awards will be presented at the conclusion of halter judging on Sunday 9th September.

Accommodation:

Maureen has been busy organising discounts at a number of Motels in Goulburn.
To receive the discount, you need to book directly with the Motel and mention “*The Charles Ledger Alpaca Show*”

Motels offering discounts:

Heritage Motor Inn – 02 4821 9377
Goulburn Motor Inn – 02 4821 4488
Best Western Motor Inn- 02 4821 2422
Posthouse Motor Lodge – 02 4821 5666
Bakehouse Motel – 02 4821 7666
Parkhaven Motel – 02 4821 4455 ,

If the above motels are full, here is a list of other motels available:

Lilac City Motor Inn – 02 48212930
Willows Motel – 02 4821 4322
Alpine Heritage Motel - 02 4821 2930
Fireside Inn Guesthouse - 0499 060 446
Hillview Motel – 02 4821 3130
Mandelson's of Goulburn – 02 4821 0707
Please do not leave booking accommodation to the last minute.
NB: There are camping sites at the venue.

Facilities have been booked for both Friday & Saturday evenings for dinner at the “Workers Club”, please join us for a Bistro meal in the function room.
There will be a courtesy bus to and from the Workers Club and your Motel, this will need be booked through the Club on 4821 3355 on the day.

NSW Regional Stall

You are invited to sell your alpaca product on the shared NSW Region Stall you will be required to join the roster and spend some time helping to man the stall, and make a donation of your product to the value of at least \$20 for the raffle.

This is a great way to market your alpaca products to the greatest alpaca fans in the country: “Alpaca Breeders”

Please contact Lyn if you are interested: alpaca@dairyroadalpacas.com or 0438 525 129.

This is a great opportunity to market your product.

Debra Trostian

Show Convenor

sanddtrostian@gmail.com

0417689197

The Issue of Weeds

Welcome to another weed article for Alpacas NSW newsletter. In this article I might be asking you to change your way of thinking and really have a look at land under your control and ask yourself “what really should be there”. We have altered the Australian landscape dramatically in the last 200 years.

Look at how the Australian nature ought to be and do weeds have a place or purpose on your land. Maybe look at how we are creating opportunities for weeds by what we do. Many pasture plants are viewed as weeds by naturalists however we are using those weeds as grazing plants for our alpacas and other livestock. So not all weeds should be seen as villains. In many cases weed have been here a long time and are out of control and will never be eradicated.

There seems to be an increased tolerance of weeds by landholder's especially large weeds like Blackberries and grass weeds like Serrated Tussock. In the past, having weeds on your land was viewed as a failure by the landholder in their responsibilities towards themselves and their neighbours and this was seen as a shameful act by responsible landholders. The shame concept seems to be replaced by an increased tolerance of this and other things within our communities.

EXCLUSION of weeds through proper planning and good machinery hygiene is the best first step in weed management. Often a few plants is seen as not an issue but this thinking needs to be turned on its head as this is the cheapest and easiest time for any weed management actions taken with a real chance of total ERADICATION from your land.



Photo: Static.fairfax.com.au

The major concern that your local Council's and LLS's are worried about in coming months and years ahead is 'what weeds are coming into their local areas in fodder as a result of this drought'. The first step of EXCLUSION is the first causality of desperate times like drought especially a long drought like we are experiencing. So you will all have to monitor all your land after the drought break. When the grass once again become plentiful and livestock start avoid undesirable species again, these weeds will take this opportunity to colonise your land while the stock are eating down the more desirable plants to their taste.

Remember we all have a General Biosecurity Duty (GBD) under the Biosecurity Act 2015 that came into force last year. GBD means “Any person who deals with biosecurity matter or a carrier and who knows, or ought reasonably to know, the biosecurity risk posed or likely to be posed by the biosecurity matter,

carrier or dealing has a biosecurity duty to ensure that, so far as is reasonably practicable, the biosecurity risk is prevented, eliminated or minimised”.

The NSW Invasive Species 2018-2021 is an update of the NSW Invasive Species Plan 2008-2015. This plan supports the NSW Biosecurity Strategy. It identifies ways to help prevent new incursions, eliminate or contain existing populations and effectively manage already widespread invasive species including weeds and many other things. So have a look at this plan as all government agencies, industry, landholders and members of the community play a valuable role in confronting the challenges and achieving the goals and actions outlined in this plan. Industry and private land managers play a key role in managing invasive species, managing risk, managing vectors or pathways for invasive species introductions and detecting and reporting new incursions. Over 1650 introduced plant species have become established in NSW, with at least 300 of these weeds having significant environmental impacts. It is estimated that the cost of weed impacts and weed management to the NSW agriculture sector is around **\$1.8 BILLION per annum**. Now that is a lot of money.

On a broader and more general note, as your pasture grass disappears down the throats of your alpacas this Winter, it will expose a couple of things. Your alpacas might start wearing Bathurst Burrs, Horehound seeds that missed your weed management techniques applied over the last few months.

Barer pastures may expose dead and living weed species you were not aware were there. The dead weeds like Bathurst Burrs can be collected and burnt that will add further to the destruction of any seed bank available next growing season. Blackberry bushes that were sprayed over the Summer/Autumn period can be slashed or burnt in late winter to destroy vermin harbour while increasing available pasture for alpacas without the tangle hazard for their fleece therefore reducing vegetable matter (VM) in fleeces at shearing.

Winter can also expose weeds like Serrated Tussock, a weed that has no boundaries since its seed heads can blow many kilometres. Plants can be physically removed (dug out, ploughed in) or treated with herbicide. Winter allows Serrated Tussock plants and African Lovegrass to be easily found as the frosts bleach plants making them stand out more in your pasture. Treating plants now will prevent seed set in the Spring and Summer time. You can burn thick Serrated Tussock and African Lovegrass patches in Winter as this will allow for a much more cost effective herbicide treatment in later months and may provide much needed late Winter feed as the regrowth will be soft and green.



Photo: Static.fairfax.com.au



Photo above: www.southwest.org.au – African Lovegrass

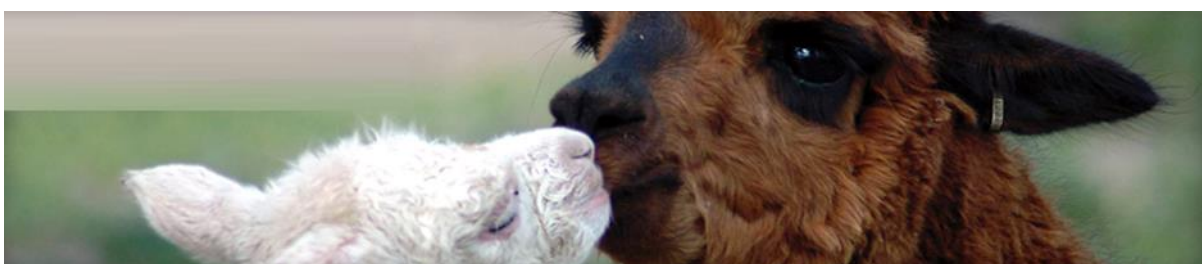
Often weeds will be the last plants to be grazed by alpacas indicating that they are less desirable by alpacas but this is not always the case. Chilean Needle Grass (CNG) is readily grazed by livestock until it becomes long and coarse after seed set but then becomes palatable in the Springtime. Meanwhile CNG seeds is impacting on your alpacas by fleece contamination and damage to their eyes, mouth, feet and legs etc.

Late Winter and Spring is a good time to start managing any thistles you have on your land especially Scotch & Illyrian Thistles while they are still in the rosette (flat leafy) stage. If you only have a few plants, manual removal by chipping out is the cheapest option however the size of the infestation, timing of finding the thistles, current weather conditions and resources available to you will dictate how you can manage the thistles. So Winter is a good time to carry out some weed management. I know it's cold however you will soon warm up swinging a mattock chipping out those thistles.

Whatever weed you have growing on your land, it is taking up valuable grass space and you are paying land rates for land that is not being able to be grazed. It is the same as feral animals, it is impacting on your ability to make money as the weed infestation will only get bigger which is why they are called weeds.

So remember to report any new plant species to your LLS or Councils as there is a very real risk of new species appearing following this drought as a result of stock and fodder movement. The Councils or LLS can send the plant off to a herbarium to get it identified free of charge on your behalf whereas if you send it away for identification you may be charged. Proper identification will allow the risks of that plant to be assessed and treated accordingly.

Neil Boyd



Happy Birthday to us, we are now 3!



Find us on 

100% Australian yarn

Supporting Australian farming and jobs

Enabling you to value add to your fleece

Check out our website for more information



For more information

www.adagiomills.com.au

shop.adagiomills.com.au

www.facebook.com/adagioalpacamills

www.instagram.com/adagiomills

Need help with eAlpaca?

NSW eAlpaca trainers are:

Name	Email	Telephone
Fiona Vanderbeek	alpacas@birrong.biz	02 4878 9310
Fran Haslin	elysion@bigpond.net.au	0408 222 551
Keryn Burns	kerynburns@gmail.com	0400 780 722
Carolyn Austin	lillyfield@bigpond.com	0410 693 802
Carol Ann Stelling	Trickywoo12@hotmail.com	
Dale Brown	aaanswpresident@gmail.com	6373 8112 0458 302 845
Jennie Menzies	rjmenzies@activ8.net.au	02 6337 7388
Nigel Thompson	nigel@adorealpaca.com.au	SMS (BH) 0439 475 493 Phone (AH) 0439 475 493
Sandra Vella	sanchavel@activ8.net.au	02 6564 2046
Cathy Reid	cathyreid@bigpond.com	email only weekday evenings

The first time you login, you will need to set a password – simply go to the login page www.ealpaca.com.au and use the Forgot Password feature (do not enter anything in the Username field at this stage). You should then receive an email from eAlpaca, which will be sent to the email address you have registered with the AAA. Follow the instructions in the email and you'll be in! From then on, your Username is your email address.

Advertise Here!!

Colour back page: \$80 per issue

Full page: \$45 per issue or \$145 for 4

Half page: \$30 per issue or \$90 for 4

Quarter page: \$25 per issue or \$75 for 4

Business card ads: \$10 per issue or \$30 for 4

Stud sire listings \$15 for 4 issues

All prices are GST inclusive.

2018 Carousel of Colour

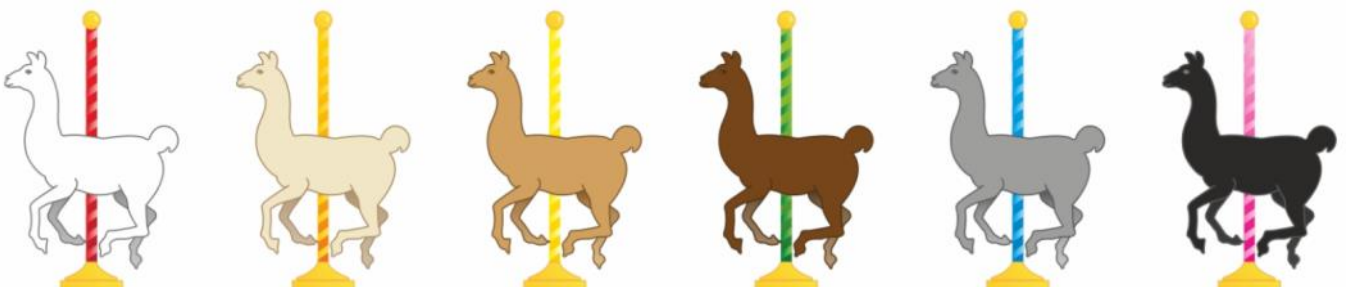
What a great show!! We had exhibitors attend from across NSW, VIC and SA, with many traveling hours to attend. The organising team would like to thank everyone who attended the show, especially those that travel some way to get to the show.

A huge thank you to those who helped out during the show. Without assistance, shows just don't run - so thank you all for helping out. Many hands make light work!

Congratulations to all that were awarded places, champions, reserve champions and supreme awards – congratulations!! The trophies for the show were handmade by a local Murrumbateman potter – Susan from Hillgrove Pottery: <https://www.hillgrovepottery.com.au/> The wine provided to the judges as thank you gifts were supplied by Four Winds, another local Murrumbateman business: <https://fourwindsvineyard.com.au/>

We also have the pleasure of running two youth events at this year's show: Junior Judging and Paraders. Thanks to those who organised and sponsored these events. It's great to get the youth involved in the alpaca industry.

Thank you to the judges, Ben Schnaal and Dean Ford. The judging was well received with in-depth comments provided to exhibitors. In speaking with the judges after the show both Ben and Dean mentioned what stunning alpacas were shown over the weekend. They congratulated all the exhibitors on showcasing some truly beautiful and true to type breed standard alpacas. Ben said the standard shown were national standards!! Well done to all.



I would like to again thank our wonderful sponsors:

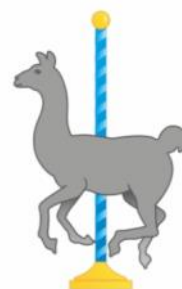
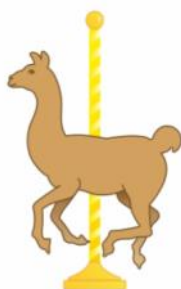
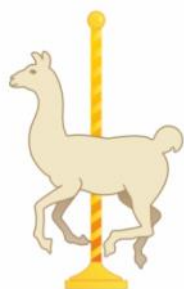
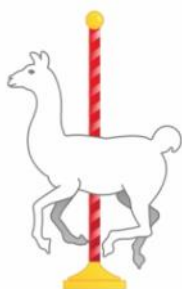
- Millpaca
- Goulburn Show Society
- Monga Alpaca
- Serialars
- Joma Alpacas



The dates for next year's show are the 25th and 26th May 2019 - same place and same great show! Hope to see you all there again next year. To keep up to date on next year's show please like and follow the shows Facebook page.

Angela Smith

Pictures—Abby Gold





"Alone, we can do so little; together we can do so much." -- Helen Keller

The recent AAA survey earlier this year on the Australian Alpaca Clip revealed that there are breeders – breeders in a fleece industry – throwing fleece out – and sadly placing little or no value in the fibre.

Why would you breed alpacas or become involved with fleece industry if you did not value the importance of the fibre?

The international and domestic market for alpaca fleece is growing steadily and Agri Futures Australia reported that "In 2011 -12 an estimated 188 tons of alpaca fibre was produced in Australia with a gross value of AU\$2.6M"

Now more than ever is the time for us to capitalise as an industry on the excitement that is a being shown for our fibre – locally and internationally. It is the genuine opportunity of functioning together that will place rewards back directly to where it should go – to the Breeders.

To this end the Waratah Alpaca Fibre Co-Operative successfully held its formation meeting on Saturday 16th June 2018 at the Mittagong RSL. Some 50 plus attendees voted unanimously to form the co-operative and commence to sell Australian Alpaca Fibre to the world market.

The benefit of the Co-Operative structure lies in the membership base with breeder's large and small working in association with each other – sharing individual and co-operative returns as members.

Waratah Alpaca Fibre accepts fibre from Members and Non Members.

- All Colours
- All Breeds – Hucacuya and Suri
- All Micron Ranges, from Ultra-Sheer to Extra Strong
- All your Fleece – Saddles, Pieces & Skirtings
- All Year Round collections/drop offs points nation wide

Getting the most out of your fibre

The value of your return will be indicative to the work you place into preparing your fibre for sale. Ideally, fleece is to be supplied skirted, micron tested and free from contaminants including vermin, vegetable matter, baling twine, sticks etc

Colours should be with their own colours, skirtings inclusive – white with white, light fawn with light fawn, brown with brown etc.

Fibre supplied to the co-op without testing, skirting etc – can still be accepted – but will be only paid at a skirtings/pieces rates.

What are we collecting now?

We currently are seeking WHITE Fibre for a Chinese order – a 10 tonne order. If you have white fibre – and are keen to sell and why would you not – as we are fleece industry. It is the time to get it out of the sheds and to the Co-Op.

Contact us via facebook, email – waratahalpacafibre@gmail.com or directly to Mick Williams on 0407 407 618 to find out more how you can get your fleece sold.

Email contact is the best for consignment sheets, audit tools, membership information or for additional information.

Our success as an industry lies through collaborative farming Waratah Alpaca Fibre can provide Australian Alpaca Fibre producers strong reliable markets for the sale of their fibre - maximising grower returns back to where it belongs – directly to the Breeder.

Waratah Alpaca Fibre Co-Operative – What are you waiting for?



Calendar of Events

Event	Date	Location	Contact
Mudgee Sml Farm Field Days	13-14 July	Mudgee	Louise Manwaring 0417069951
Birthing Workshop	21-22 July	Bathurst	Jennie Menzies - 02 6337 7288
Winter Wonderland Show	4 August	Mudgee	Judy Kain - 02 6372 1714
World of Alpacas	12 August	Southgate, NSW	Pauline Glasser 02 6647 7454
Aust Alpaca Spectacular	23-26 August	Bendigo	www.australionalpacaspectacular.com.au
Charles Ledger Show	8-9 Sept	Goulburn Showgrounds	Deb Trostian - 0417 689 197
Aust National Field Days	25-27 Oct	Orange	Kylie Streatfeild - 0428 665 067

To those who cannot attend these workshops, similar events can be arranged in your zones. All you need is a suitable venue and some volunteers from your zone to assist. You will also need potential suitable numbers of attendees to contribute to costs. Facilitators are willing to travel however their costs must be covered by the event. Your zones AAA NSW committee members will be happy to assist in arranging events. Remember, keep up to date with shows and events. Visit: www.aaanswalpaca.com.au/calendar

Please remember to register **ALL** events with Keryn Burns 0400 780 722 aaanswevents@gmail.com

Wild Dog Exclusion Fencing

From time to time unfortunately we all need to deal with problem dogs, either domestic or wild.

Australian Wool Innovation have just released a guide to help with fencing considerations for wild dogs, that alpaca breeders might find interesting.

Domesticated dog behavior is different to that of wild dogs, however the guide may still provide practical fencing considerations for both situations.

The guide is called: Wild dog exclusion fencing: A practical guide for woolgrowers. Found at this link: <https://www.wool.com/.../awi-wild-dog-exclusion-fencing-guide...>



Handling Farm Chemicals

Do you know the health and safety risks when handling and using farm chemicals?

Most farm operations use chemicals in land and livestock management, including alpaca farms. Chemicals carry risks to both humans and the environment, therefore it is very important to fully understand the risks before you purchase the chemicals.






Why do I need to understand the risks before I purchase the chemicals and not before I use them? Good question. Risk management is best understood as a 'whole of life' practice. This means that good risk management considers the product from the beginning to the end and all the uses in between.

Before you purchase a chemical it is good risk management to consider the use of the chemical from purchase, transport, use, storage and then to disposal – the whole life of the chemical. It is recommended that you ask a few questions, as suggested below, before you even consider purchasing a chemical for use:

- How will the chemical be used?
- What training do I need to complete to be able to use the chemical safely?
- What training do I need to give my family and workers, who will also be using the chemical?
- Where will the chemical be stored? Is the storage location secure and will it prevent escape of the chemical into the environment if the container fails?
- Do I have a containment system (e.g. spill kits) in case the chemicals do spill?
- Do I have the correct PPE (personal protective equipment) to wear when handling and using the chemicals?
- Do I understand how I will dispose of the unused or out of date chemicals and also the empty containers?

These are just a few things to ask yourself before you purchase any chemicals.

Chemical warning labels have changed recently under the globally harmonised system of classification and labelling of chemicals (GHS). The GHS is a system used to classify and communicate chemical hazards using internationally consistent terms and information on chemical labels and Safety Data Sheets. The GHS provides criteria for the classification of physical hazards (e.g. flammable liquids), health hazards (e.g. carcinogens) and environmental hazards (e.g. aquatic toxicity). The GHS was mandatory from 1 January 2017, meaning that all chemicals for sale form that date must contain information and labelling that complies with the GHS guidelines.

GHS PICTOGRAMS		
Health Hazard Carcinogens, respiratory sensitisers, reproductive toxicity, target organ mutagens		Flame Flammable gases, liquids, & solids; self-reactives; pyrophorics;
Gas Cylinder Compressed gases; liquefied gases; dissolved gases		Corrosion Skin corrosion; serious eye damage
Flame Over Circle Oxidisers gases, liquids and solids		Environment Aquatic toxicity
		Skull & Crossbones Acute toxicity (severe)
		

To help end users to understand the risks of the particular chemical the GHS includes symbols.

Obtain and read the Safety Data Sheets (SDS) of all chemicals that you are considering using. The SDS are also compliant with the GHS and contain a wealth of safety information.

Also providing assistance to farmers is WorkSafe NSW safety website which is available to everyone to help you to consider the risks of commonly used farm chemicals. [http://www.safework.nsw.gov.au/health-](http://www.safework.nsw.gov.au/health-and-safety/industry-safety/farming)

[and-safety/industry-safety/farming](http://www.safework.nsw.gov.au/health-and-safety/industry-safety/farming)

Remember that farm safety is very important – it helps to keep you, your family, your workers and the environment safer. It is good practice to consider your health and safety when using chemicals when managing your farm and livestock.

Written by Angela Smith
Diploma of WHS (National Safety Council of Australia)

Agricultural chemical awareness

The agricultural sector uses a variety of pesticides to protect plants, animals and agricultural products from harmful pests and diseases.

Many of these pesticides contain hazardous chemicals that can have short and long-term health effects if not managed safely.

Know your chemicals

Below is some information on hazardous chemicals you may have come into contact with.

Benzene in diesel/petrol emissions

Chlordimeform

Organophosphate

Made with Australian Alpaca Fleece



aaconnection.com.au



[/australionalpacaconnection](https://www.facebook.com/australionalpacaconnection)



[@australionalpacaconnection](https://www.instagram.com/australionalpacaconnection)



Pre Shearing Workshop

What a happy day.

There was a "full house" at Julianne and Frank Gelber's for the Pre-Shearing Workshop in Orange on Sunday 3rd June.

The facilitators for the day were Fiona Vanderbeek and Bob Kingwell and for those who have never been to a Pre-Shearing Workshop, the topics covered included

- Pre-shearing planning and preparation
- Shearing shed set-up
- Sorting, skirting and packaging of fleece
- Midside testing
- Shearing sequence
- Risk Assessment
- Fleece sorting
- Fleece skirting
- Packaging and storage



There were theoretical components and practical components to the day

We also had Stuart Marshall (fleece classer) helping with his wisdom and experience, Joe and Julie Hofer from "Petlyn", with a display showing what people can do with fleece and their products, Nadine Hulme from "Adagio" (plus her three beautiful boys - all on their best behaviour) gave a talk about fleece from a mill's point of view.

Everyone enjoyed the day and learnt *lots* about fleece. The company and the food were great. The weather was beautiful. All in all, a great day.

A huge thank you to all involved, Fiona and Bob, and especially Julianne and Frank for their hospitality to all and for the use of their beautiful animals for demonstrations.



Pictures by Joy Newman and Jennie Menzies

Top ten tips of alpaca nutrition

Jane Vaughan BVSc PhD MACVSc



1. How much to feed?

Alpacas will eat approximately 1.5% of their body weight as dry matter to maintain body weight (i.e. not growing, pregnant or lactating; Table 1).

Feed up to maintenance requirements with palatable, digestible roughage (leafy, green pasture, hay, silage).

E.g. 70 kg alpaca:

70 kg x 1.5% of body weight = 1.05 kg as dry matter (DM) i.e. all water removed from feed

1.1 kg DM x 100/20 = 5.3 kg lush pasture/day (grass with 20% DM content)

1.1 kg DM x 100/90 = 1.2 kg pasture hay/day (hay with 90% DM content)

Growing alpacas and late-pregnant and lactating females will eat about 2-2.5% of their body weight as dry matter. Feed up to maintenance requirements with *palatable, digestible* roughage (leafy, green pasture, hay, silage). Then supplement with energy/protein as required (good quality lucerne hay/oats/lupins/peas).

Table 1. Summary of feed requirements in alpacas.

Feed requirements Av. female 60-80 kg Av. male 70-90 kg	Maintenance (> 2.5-3 years of age)	Growth (crias should double birth weight by 50 days of age)	Lactation (peak milk output 2-4 weeks post-partum)
Dry Matter Intake (DMI % BW/d)	1.5% (1.1-1.6%)	1.8-2%	2-2.5%
Crude Protein %	8-10%	14% < 12mo 12% > 12mo	13-15%
Crude Fibre %	25%	20-25%	20-25%
Neutral Detergent Fibre (% BW/d)	0.8-1.0%	0.6-0.8%	0.8-1.0%

2. Body condition score to monitor if feeding too much or too little

Based on the 1 (emaciated) – 5 (obese) system used by the Australian Alpaca Association Inc., body condition scoring involves palpation of various parts of the body to ascertain the degree of body fat cover (or lack thereof; Figure 1). Gut fill and foetal size does not interfere with scoring. Ideal body condition score for a non-lactating, non-pregnant animal is body condition score (BCS) 2.5-3.

The first area to feel is the backbone near the last ribs. Do not palpate over the pelvis, as alpacas invariably feel skinny here due to their lack of muscling. The muscles over the vertebrae should be flat (triangular cross section) and the backbone palpable for a BCS 3. Animals that are too thin have concave musculature and animals that are too fat have convex fat and muscle bulging. Confirm your initial estimate of BCS by palpating the ribs at the point of the elbow. In an animal of BCS 3, you will just feel the ribs. Leaner animals have more prominent ribs, fatter animals' ribs are more difficult to feel, or may be unpalpable if very fat. Lastly, observe and palpate the hairless areas between the front legs and back legs to back up your score. Practise and consistency are the most important features of body condition scoring.

- Growth: 3
- Maintenance: 2.5-3

- Females at full term: 3
- Working males: 2.5-3

Palpate musculature over the backbone at the level of the last ribs.

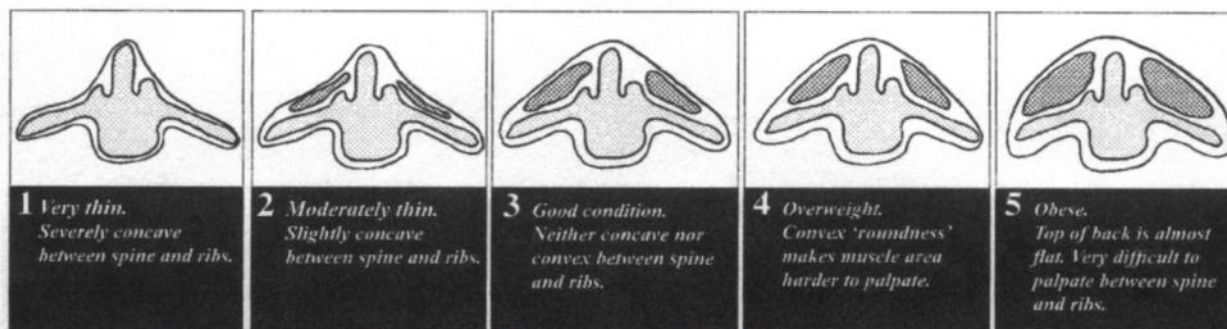


Figure 1: Alpaca Note 4: Body Condition Score of Alpacas. Prepared by AAA Inc. Education and Training Sub-committee.

Aim for body condition scores somewhere between BCS 2.5 and BCS 3

If alpacas are too fat, feed less. If alpacas are too thin (e.g. during growth, pregnancy or lactation), feed more, better quality feed. If some alpacas in the same paddock are too fat and some are too thin, then divide the group and feed accordingly.

3. Pasture and water will supply most nutrients

Alpacas require four main ingredients in their diets: *water, energy, protein and fibre*.

Ensure access to fresh clean water at all times. The daily requirement of water is 30-80 mL/kg body weight per day (3-8% BW/day). So a 70 kg alpaca requires 2.1-5.6 litres water per day. The amount of water drunk is lower when grazing green pasture (20% DM) compared with hay (90% DM). Alpacas will drink more water in hot weather and when lactating. Check water troughs daily, clean them weekly.

Pasture will supply most energy, protein and fibre needs. Remember that *pasture intake is driven by quality of feed, not quantity*. The proportion of each depends on plant maturity (Figure 2). It will also satisfy most vitamin and mineral requirements.

Total ration (100 %) = protein % + energy % (sugars and fats) + fibre (cell walls) % + minerals %

Note that as the proportion of one nutrient increases in a ration, the proportion of other nutrients must decrease.

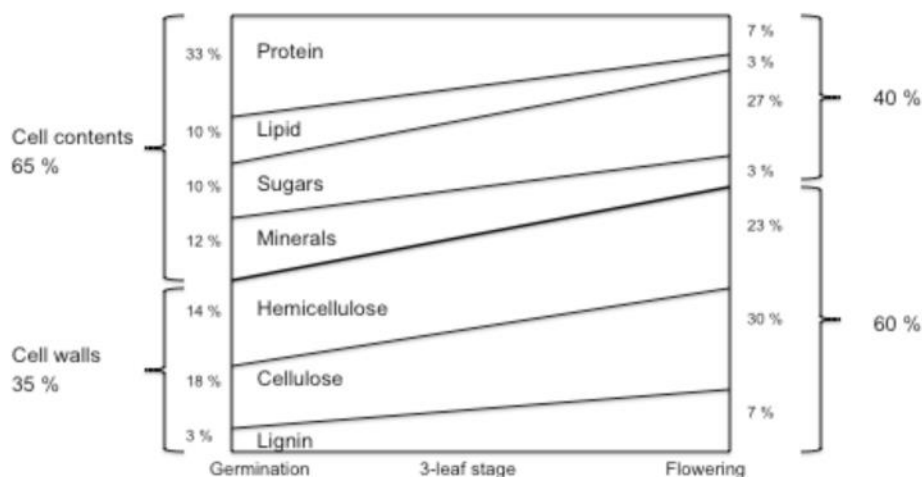


Figure 2. Feeding value of grass and how it changes with different stages of maturity [adapted from (Beever, Offer et al. 2000)].

Greener pastures contain more protein, therefore as pasture matures, protein decreases. Crude protein content of feed required for maintenance is 8-10%. Higher levels are required for growth (12-14% CP), pregnancy (12% CP) and lactation (13-15% CP).

4. Feed long-stemmed roughage

Alpacas need palatable, digestible, long-stemmed roughage (leafy, green pasture, hay and/or silage greater than 4 cm in length) to keep their fore-stomachs functioning normally. A diet based on very short (or non-existent under drought conditions) pasture, chaff and grain/pellets or very lush spring pasture is not adequate to keep the stomach healthy. Ensure ad lib, long-stemmed, palatable, digestible pasture/hay at all times if pasture fibre is limited. A rough estimate of plant fibre content in pasture may be gained by *manually testing the breaking strength* of plant matter – more mature plants contain more fibre (thicker cell walls, more lignin) and are more difficult to break and are thus less palatable and less digestible.

Feed intake is driven by quality of feed, not quantity. 120/%NDF = amount DMI as a % of BW possible/day: e.g. if straw NDF is 80%, then DMI = 1.5% of BW is possible; if clover hay NDF is 45%, then DMI = 2.7% of BW is possible

Observe alpacas to see if there is enough fibre in the diet:

- > 50% of recumbent alpacas should be chewing their cud
- Body condition score adequate – adequate fibre in the diet is required for fat deposition
- Faecal consistency – % fibre vs % DM in diet

5. Vitamins

Many of the *water-soluble vitamins* (vitamins B, C) are provided by the microbes that live in the fore-stomachs, so healthy alpacas do not require supplementation if they are healthy.

Of the *fat-soluble vitamins*, vitamins A and E are available from green grass (even from green weeds that come up after brief summer rain) so only need supplementation if pasture is completely dry for more than 8-10 weeks.

Vitamin D supplementation is required in alpacas. Inject all alpacas less than 3 years of age, and all females due to give birth in winter/early spring (to fortify colostrum) with 2000 iu vitamin D/kg body weight under the skin or into the muscle. Administer in late autumn, mid-winter (and early spring in higher latitudes like Tasmania, New Zealand, Europe, Canada). Read the label on the bottle to determine vitamin D concentration to determine what volume to administer.

E.g. A 20 kg cria needs 40,000 iu vitamin D. If there is 75,000 iu per mL vitamin D in your selected source of vitamin D, then the cria would need approximately 0.5 mL of solution injected. Too much vitamin D can be toxic.

6. Minerals

Are minerals deficient in the surrounding area in sheep and cattle? Ask the local Department of Agriculture, district veterinarian and neighbouring farmers for information. If in doubt, sample soils, pasture and/or alpacas to determine if mineral levels are adequate, before supplementation.

Acid, water-logged soils (annual rainfall > 500 mm) contribute to selenium deficiency. Selenium deficiency may be treated using an annual depot injection under the skin of barium selenate. Alternatively, alpacas may be supplemented by short-acting oral preparations at a rate of 0.1 mg/kg BW *orally* every 4-6 weeks. Do not *inject* alpacas with sodium selenite or sodium selenite as it can cause peracute liver failure and death.

7. Feeding supplements

Beware of feeding unnecessary supplements that may be costly, labour intensive to feed out and/or toxic to camelids. Do not feed out supplements designed for use in horses and pigs as they have different digestive systems and different mineral requirements. In the words of the late Dr Murray Fowler, University of California (Davis), "the most toxic plant for alpacas is the food-processing plant".

Unless pellets are being used exclusively to deliver a specific supplement (e.g. zinc to assist with facial eczema prevention), avoid feeding pellets as they are usually rapidly digestible, very low in fibre and will cause acidosis and possibly death. In the words of Dr LaRue Johnson, Colorado State University, "you do not have to feed alpacas pellets because they make their own".

8. Access for all

Animals should have access to long-stemmed fibre at all times (e.g. in drought conditions, consider placing a large round bale of pasture/oaten hay in the paddock). If supplementary feeding of concentrates (eg grain, pellets) is required, make sure all animals can access the feed at the same time. Feed can be put out

directly onto the ground, but wastage may be reduced by feeding in long troughs (e.g. guttering, old conveyor belting laid out on ground, shade cloth attached to fence).

Introduce new feeds over a period of 10-14 days to allow adaptation to the new feed. Once adapted to the new feed, feeding twice as much, every second day will save time and money, but more importantly will allow shy-feeders access to supplements. The dominant animals will fill up quickly and move away when full, allowing the shy feeders to eat the supplements later in the day/overnight.

9. Feed wastage

If supplements remain at the next feed out, or hay is being wasted, animals are being fed too much (do their body condition scores reflect this?) Ensure that growing, pregnant and lactating animals are fed appropriately with good quality feed and feed the left-over portions to non-pregnant/non-lactating females, wethers etc.

10. Use good quality feedstuffs & keep it simple

Feed intake is driven by quality of feed, not quantity. Get pasture/hay/supplements feed-tested so quality is known. *Feed alpacas up to maintenance requirements* (go back to Point 1!) *with good quality pasture/hay/silage.* Supplements for growth, pregnancy and lactation may be met by providing energy with cereal grains (e.g. oats – preferred over wheat/barley due to higher fibre content) and protein with lucerne hay and lupins (Table 2). Complicated recipes containing scoops of this and cupsful of that do not alter cria sex or kill worms, but may waste owner time, energy and money.

Table 2. Nutritive values of some commonly available stockfeeds

(adapted from *Feedtest 2014* and *Drought Feeding Management of Sheep, Agriculture Victoria 2007*).

Feed Type	Av. metabolisable energy (range) (ME MJ/kg DM)	Av. crude protein (range) (CP %DM)	Crude Fibre (%DM)	Neutral detergent fibre (NDF %DM)
Spring pasture	11 (8-14)	25 (15-30)	23	38
Dry pasture feed	6 (3-8)	5 (4-8)	40-60	70-80
Pasture hay (mid-season)	7 (6-7)	11 (8-16)	28-32	49-56
Grass hay	6 (5-7)	8 (5-10)	32	56
Clover hay (early)	8.5 (7-9.5)	18 (15-20)	28-30	42-46
Oaten hay	7 (6-7)	8 (5-10)	32	56
Straws	5 (4-8)	4 (2-5)	50-70	80
Lucerne hay	8.5 (7-9)	20 (16-25)	24-28	45-50
Mixed pasture silage	8 (6-10)	11 (5-19)	29-35	45-60
Oats	11 (9-12)	9 (6-12)	12	26-35
Wheat, barley	12 (11.5-13)	10 (8-14)	2-5	12-20
Maize	13 (13-14)	9.5 (7.5-12)	2-5	12-20
Lupins	12 (12-14)	32 (28-36)	15	24
Peas	12 (11.5-12.5)	24 (20-27)	15	24

USE GOOD HUSBANDRY TECHNIQUES. KEEP GOOD RECORDS. WRITE DOWN TREATMENTS/MATING DATES/MEAT WITHHOLDING TIMES.

NO PRODUCTS ARE REGISTERED FOR USE IN ALPACAS. CONSULT YOUR VETERINARIAN AND ALWAYS READ THE LABEL BEFORE USING ANY OF THE PRODUCTS MENTIONED. **NEVER** USE ANY PRODUCT IN ALPACAS THAT IS NOT REGISTERED FOR USE IN FOOD PRODUCING ANIMALS.

FOR ANY SIGNS OF UNUSUAL OR SERIOUS ANIMAL DISEASE, RING THE DISEASE WATCH HOTLINE: 1800 675 888.



Copyright © Jane Vaughan

The advice provided in this publication is offered as information only and is based on knowledge and understanding at the time of writing. While the information in this publication has been formulated in good faith, the contents do not take into account all of the factors that need to be considered before putting the information into practice. Accordingly, no person should rely on anything contained herein as a substitute for specific advice. The author does not guarantee that the publication is without flaw of any kind or is wholly appropriate for your particular purposes and therefore disclaims all liability for any error, loss or other consequence that may arise from you relying on any information in this publication.

Australian Alpaca Weekend

Tocal 2018 4-6th May 2018

I would like to thank all those that helped over the three-day event. Great sunny days for three days – great weather for outdoor events. Stewart & Fiona, Daniela, Wayne & Helen, Nigel & Liz, Peter & Lyn and Peter T. who gets all the required pens, tables, straw etc. to Tocal for us.

Friday is always the slower day of the three with schools from everywhere attending and asking lots of questions. But, we did have people who attended on Friday come back on Sat. or Sunday to ask more questions. Saturday and Sunday were extremely busy and with an overall increase of 4% in attendance numbers over the three days.

We handed out information and stickers and spoke to the public non-stop answering all the questions regarding alpaca and the fibre, processing and product. Sunday was non-stop until around 3.30pm. This year we added tasting, with Alpaca Jerky donated by Ian. This was a very interesting exercise as we had people who we thought wouldn't taste the jerky but did taste and enjoyed it, others who you thought would taste declined, other people who requested a taste, and some business people (e.g butchers) who requested the contact details.

Helen and Nigel placed us onto social media. If you would like to see the many photos Helen shared on facebook, go to either Peter Tulip, Hunter Alpaca or Helen Sorby and share to everyone.

Thanks to all! Narelle Tulip



Booyong 2018 5-6th May 2018

Booyong Alpacas had their open weekend on the 5th & 6th of May which was advertised on various Facebook sites. This had a great outcome with 10 different groups on the Saturday and 8 different groups on the Sunday visiting.

All the mothers and babies were on show in the maternity yard and some weaners for sale in the shearing pens which allowed the people to get up close and hands-on. Full tours were given with "Tom" our cat looking after the ribbons.

Fleece set on a skirting table next to a spinning wheel created interest in how raw fleece could be transformed. The Booyong shop was open to show some finished products where some items were purchased.

There was tea & coffee on tap and every one was happy to stay a while and have a chat about the alpacas. I think we converted a few and hopefully a few alpaca sales soon. Faye Whitfield



Madison's Mountain Retreat 4-6th May 2018

Madison's Mountain Retreat in Kurrajong Heights just outside of Sydney opened for Alpaca Weekend on Friday to Sunday 4-6 May 2018. They are an easy daytrip from Sydney which works in their favour for our Open Farm - and the Alpaca Industry. Friday had a steady stream of people including three mini bus loads of disabled adults (from different group homes - they didn't know each other!).

The Open days started at 10am, so 9.30am on Saturday morning, a person arrived to buy 2 alpacas. What a great start to the weekend! He wanted to surprise his girlfriend and had driven 2 hours to get to us (without calling first...).

Most common question? What is the difference between an alpaca and a llama? This time, they could feel the soft luxurious fleece of a cria, and meet our llamas (obtained from a local who was moving back to town for health reasons) - which were happy to keep eating from visitors all day!

We had over 50 people attend on Friday, 100 on Saturday and 150 on Sunday. A successful busy weekend for us and our volunteers. Debbie Redelman



AAA NSW Region Stud Sires

SURI

Alabaster Sinbad

White

IAR 202233



Stud name: Fern Tree Alpacas DOB: 02.02.2014 Area: Central Coast NSW

Sire: Surilana Mascusani Lavish ET Dam: Surilana Panama

Fleece Stats: 2016 Mean 19.1 μ 4.1SD 21.5CV 98.8% CF

2017 Mean 19.5 μ 4.3SD 21.9CV 98.3% CF

Sinbad has excellent genetics, as demonstrated by his beautiful soft handling fleece, lustrous flat locks, retaining fineness through his fourth fleece, hanging from a solid, well-conformed frame. He is a well-mannered sire, keen to work, with a number of solid white cria on the ground. He has won multiple broad ribbons, including Supreme in halter and fleece

Stud service fee: \$600 (GST not applicable) Live cria guarantee, Drive-by or mobile matings by arrangement

Enquiries contact name: Sue Tiley Phone and/ or mobile numbers: 0417 462 827

Email Address: ferntreealpacas@gmail.com

BUMBLE HILL KAISO MF IAR 181407

Stud name: Bumble Hill DOB: 03.06.2012 Area: Orange

Sire: Bumble Hill Picasso (NZ) Dam: Jolimont Kaimi

Fleece Stats 2015 Shearing 22.6 micron mean, 4.86 micron SD, 21.60% CV (6 point blanket sample). Kaisso is a multi broad ribbon winning suri sire. He is a Surilana Piccolo grandson and his sire had 60 + follicle density. Despite only being a B2, he has amazing presence and lustre and still exhibits an even locking silky fleece across his entire blanket. His first progeny arrived in December 2016 and is a fabulous light fawn very suri female out of a white suri female.

Stud service fee : Price on request, drive through mating in Orange.

Enquiries contact: Julianne Gelber, Ph. 6365 3669 E: gelber@bigpond.com



Wallaby Ridge Empire

Brown

IAR88840



Stud name: Hyghclere Alpacas DOB: 25/04/2005 Area: Orange

Sire: Wesuri Heritage Prince Russet Dam: Oz Eve

Fleece Stats: 2016 Mean 19.1 μ 4.1SD 21.5CV 98.8% CF

Wallaby Ridge Empire is a beautiful upstanding male, extremely lustrous and consistent throughout. Empire has proven this quality through his cria's along with his well-structured consistent return of fleece. Empire was a consistent show winner in the ring and still carries all attributes from his first fleece. Empire has produced consistent and outstanding cria's who have also done well in the show ring. Empire would be an asset to anyone wanting to breed quality coloured suri's.

Stud service \$550 inc GST. On farm mating's preferred mobile mating's also by negotiation. Enquiries: Erin & Scott Marsden Ph. 02 6365 9115 Mob. 0408 553 157

E. hyghclerealpacas@hotmail.com

AAA NSW Region Stud Sires

Suri

Pacofino Black Sabbath SBLK IAR 143947



Stud Name: Keiana Lodge DOB : 11.04.2008 Area: **Running Stream**

Sire : Somerset Stirling Moss LG Dam :EP Cambridge Silvery Moon MG

Fleece Stats:2011 Mean: 24.1μ SD 5.1 CF 86.4%

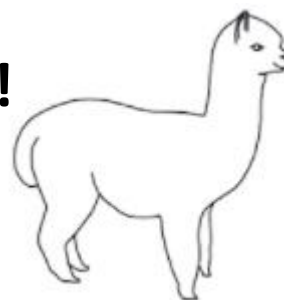
Macho is what you get with this stunning looking suri male. Black Sabbath has great presence, a fabulous, chunky suri head and has consistently been commented on at shows for his frame, strong bone and great lock coverage that is soft handling and lustrous. Both Black Sabbath's parents are grey. He has produced blacks and greys making him a worthy choice for coloured suri breeders. (co-owned with Tanglewood Alpacas).

Stud service fee: \$770 inc GST Live cria guarantee. Enquiries contact: Keith & Diana Rutter
Ph:02 6358 8275 Mob 0428 663 161 E: keianalodge@yahoo.com.au W:

www.keianalodge.com.au

Advertise your stud males here!

Only \$15 for 4 editions



AAA NSW Region Stud Sires

Huacaya

Bonnie Vale Fatal Attraction SW IAR 157271



Stud Name: Tirrikee Alpacas DOB: 06.05.2009 Area: Bathurst

Sire: Arcady Augustus SW Dam: Bonnie Vale Attraction SLF

Fleece Stats: 2012 Mean: 24.3 μ FLC WT 7.5kgs - 2013 Mean: 25 μ FLC WT 8.5kgs

Fatal Attraction is an SRS male. We bought him earlier this year to give increased length, density and decrease primary fibres. *"Good density, exceptional fleece length, silky softness and fine primary fibres, I expect his progeny to excel for both wool and frame"* Dr Jim Watts

For more information regarding Fatal Attraction and his fibre density and fibre length test results see <http://www.srsalpacas.com/au.directory.alpaca.php?id=341&show=male>

Enquiries contact: Jennie and Roy Menzies 63377388 and we will discuss your requirements.

Stud Service Fee: by negotiation. Live cria guarantee.

Bonnie Vale Ringo Star SW IAR 177926

Stud Name: Rocking Hill DOB: 3..52011 Area: Molong

Sire: Windsong Valley Voodoo SW Dam: Bonnie Vale Ring of Joy SLF

Fleece Stats: 2016 Mean: 28.0 μ SD 4.5 TFW 6.2kg

2017 Mean: 28.4 μ SD 4.9 TFW 6.0kg

Ringo is a good sized CERTIFIED macho with a wide frame who grows award winning fleeces. His 2012 fleece was awarded 83.5 points and RESERVE CHAMPION fleece at Royal Bathurst Show 2013. Ringo was awarded RESERVE CHAMPION in his halter class at the Royal Bathurst Show 2012. Ringo's 2014 fleece was awarded 81 points at the Royal Bathurst Show 2015 and was described by the judge as "a good commercial fleece".

Stud service fee: By Negotiation. Enquiries contact: Neil & Jeanette Boyd 02 63 668 117 or 0455 272 126



Warralinga - Gorge Star Glacier ET SW IAR 124703

Stud Name: Keiana Lodge DOB: 22.10.2002 Area: Running Stream

Sire: Shanbrooke Accoyo Yavari SW Dam: Blue Grass Star of Tulangi SLF

Fleece Stats: year 2012 Mean: 26.2 μ SD 4 CF 86.2%

Stud service fee: \$440 inc GST Live cria guarantee.

Enquiries contact: Keith & Diana Rutter Ph: 02 6358 8275 Mob 0428 663 161

E: keianalodge@yahoo.com.au W: www.keianalodge.com.au



AAA NSW Region Stud Sires

Huacaya

Shanbrooke Pure Evolution

SW

IAR 187274



Stud Janella Alpacas (Co owned with Regal House Alpacas) DOB: 08.07.2012

Area: Bathurst Sire: Shanbrooke Plantel Haynacho SW Dam: Shanbrooke Accoyo Pride

Fleece Stats: year 2017 Mean: 19.6 μ SD 4.5 CV: 19.6 CF 94.1%

'Evo' is an outstanding young male with dense, even, soft handling fleece with crimp all over his body and down into his legs and belly on a compact, well balanced frame. In his short career so far, he has produced show winners and certified males - all with excellent temperaments.

Fee: \$880 (Inc GST) on farm and mobile matings (conditions apply). Live cria guarantee.

Contact: Jane Merison 0419 484 589 E: kahibah@activ8.net.au W: www.janella.com.au

Windsong Valley Kenjiro SW IAR 52348

Stud Name: Bumble Hill Alpacas & Kyona Alpacas (Jointly owned) DOB : 21.06.2003

Area: Orange

Sire : Windsong Valley Iceman Dam : Kaloma Tamika

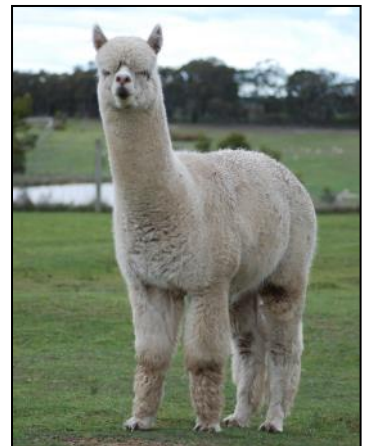
Fleece Stats : 2010* Mean : 25.3 μ , SD 5.49, CV 21.7%

Important stud sire - a broad ribbon winner in the ring and fleece shows, with impressive progeny. Exhibits a correct conformation and wonderfully lustrous, silky fleece for an 10 year old stud male.

Stud Service Fee: Price on request, drive through mating.

Enquiries contacts: Kyona Alpacas Ph 02: 6366 5067, 02 6366 3142 or

Bumble Hill Alpacas Ph: 02 6365 3669 E: gelber@bigpond.com W: www.bumblehill.com



FUTURA ESCOBAR

SW

IAR 192776

Stud names: Bumble Hill/Merungle/Walkley Fields DOB 16.03.2013A **Area: Orange**

Sire: Rosedean Sayonara Dam : Futura Flirtation

Fleece Stats 2015 Shearing 20.0 micron mean, 4.72micron SD, 23.60% CV (6 point blanket sample) His follicle density was 64.5 at maturity.

Escobar was 2013 National Junior Champion Male and his first fleece was awarded Champion 6 to under 12 months Huacaya at the 2014 National Show.

He is a compact, masculine male with Challenger and Warrior grandsires passing on a beautifully structured fleece, good looks and a good disposition. His first progeny are due in Autumn 2017.

Stud service fee : Price on request, drive through mating in Orange

Enquiries contact: Julianne Gelber, Ph. 6365 3669 E: gelber@bigpond.com

AAA NSW Region Stud Sires

Huacaya

EP Cambridge Cappacino SLBR IAR 78659

Stud Name: Keiana Lodge DOB: 19.02.2004 Area: Running Stream

Sire: EP Cambridge Peruvian Caesar (SW) Dam: EP Cambridge Peruvian Nanao (SW)

Fleece Stats: year 2012 Mean: 22.5 μ SD 3.8 CF 96.3%

At 9 years of age has remarkable fleece stats. This light brown macho is a great asset to our breeding program by introducing great fleece qualities to our black herd, thus improving our blacks which is our ultimate aim. (co-owned with Jurustalle Alpacas)

Stud service fee: \$550 inc GST Live cria guarantee.

Enquiries contact: Keith & Diana Rutter Ph: 02 6358 8275 Mob 0428 663 161

E: keianalodge@yahoo.com.au W: www.keianalodge.com.au



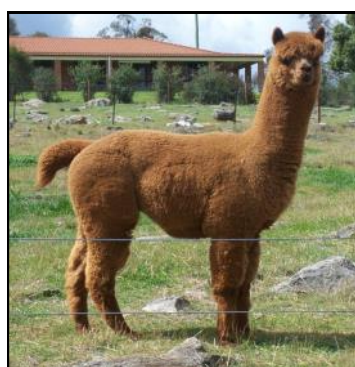
Currumbong Jareth SMBR IAR 164378

Stud Name: Rocking Hill DOB: 3.10.2010 Area: Molong

Sire: Currumbong Flash SW Dam: Morning Star Columbine DF

Fleece Stats: 2016 Mean: 25.1 μ SD 4.4 TFW 5kg

2017 Mean: 28.9 μ SD 5.0 TFW 4.7kg



Jareth has been awarded Champion ADULT Male Huacaya - Central Western (NSW) Region 2012, 1st Place 18-30 months BROWN Fleece - Bathurst Royal 2013, Champion SENIOR Male Huacaya - Bathurst Royal 2013. Sydney Royal 2014 - 2nd place BROWN fleece 30-48 months. Bathurst Royal 2014 - 1st place 30-48 months BROWN FLEECE & RESERVE CHAMPION MATURE MALE. Central Western (NSW) Region 2014 - 1st place BROWN Mature Male. Jareth 2014 fleece was awarded 73 points and 1st place at Royal Bathurst Show 2015. Stud service fee By Negotiation. Enquiries contact: Neil & Jeanette Boyd 02 63 668 117 or 0455 272 126

Alpha Centauri Pemberton BRN/RN IAR 184040

Stud Name: Hyghclere DOB: 08/02/2013 Area: Orange

Sire: Bedrock Sentinel Dam: Flying Colours Miss Penelope

Fleece Stats: 2016 Mean: 22.8 μ 4.1 SD 18 CV 95% CF

2017 Mean: 22.3 μ 4.1 SD 18.5 CV 96.2% CF

Pemberton is a well grown male with great conformation and presence. His pedigree includes Blue Grass Centurion and double Jolimont Warrior. He exhibits a dense, very bright, fine fleece with a well aligned, high frequency crimp on a long staple with exceptional handle. It is this brightness, fineness and character in his fleece that makes him an outstanding male. Pemberton has been successfully shown achieving Supreme, Champion and Res Championships. Pemberton's progeny is now also winning Championships and Supreme awards passing down his great characteristics. Stud service \$550 inc GST. On farm mating's preferred mobile mating's also by negotiation. Enquiries: Erin & Scott Marsden Ph. 02 6365 9115 Mob. 0408 553 157

E: hyghclerealpacas@hotmail.com



AAA NSW Region Stud Sires

Huacaya

Rocking Hill CJ Kamahl (Roan)

IAR 211913

Stud Name: Rocking Hill DOB: 12.4.2015

Area: Molong

Sire: Currumbong Jareth (SMB)

Dam: Forestglen Averille (LF)

Fleece Stats: 2018 Mean: 20.5 SD 4.2 CV 20.4 TFW 4.8 kg (3rd fleece)

1st Junior Male M/D Fawn & BEST in COLOUR at Boorowa Show 2016.

1st Junior Male M/D Fawn and **CHAMPION JUNIOR MALE** at Royal Bathurst Show 2016.

BEST IN COLOUR - FAWN FLEECE at Royal Bathurst Show 2017

1st Intermediate M/D Fawn Fleece at Charles Ledger 2017. **2nd M/D Fawn Fleece** 79 pts -

Royal Bathurst Show 2018. **2nd Senior Male ROAN** Royal Bathurst Show 2018. **2nd M/D Fawn ADULT** fleece Hawkesbury Show 2018.



Stud service fee: By Negotiation.

Enquiries contact: Neil, Jeanette & Chloe Boyd 02 63 668 117 or 0455 272 126



Ambersun Quicksilver Medium Grey IAR 213862

Stud Name: Keiana Lodge DOB: 14.02.2013 Area: Running Stream

Sire: Jolimont Tiberio MG Dam: Ambersun Katrina (MF) - an Auzengate female

Fleece Stats: TBA

The new Grey boy on the block at Keiana Lodge. More details to follow....

Enquiries contact: Keith & Diana Rutter Ph:02 6358 8275 Mob 0428 663 161

Yaringa Pharoah

Black

IAR 201998

Stud Name: Dunbars Run & Yaringa Alpacas

DOB: 08/02/2013

Area: North Richmond

Sire: Classic Darkness Before Dawn Dam: Yaringa Czarina ET

Fleece Stats: 2015 Mean: 21.5µ 4.3 SD 20 CV 95.7% CF

2016 Mean: 22.1µ 4.8 SD 21.9CV 93.5% CF

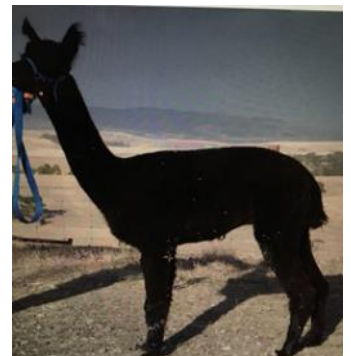
A stunning black male with highly regarded genetics. This male has a beautiful handing fleece with amazing style. Pharoah has a commanding presence and is an animal that should be considered in any serious black breeding program.

Stud service fee: \$ 660.00 including GST (or GST not applicable) Live cria guarantee, drive through & mobile matings available, please contact to discuss.

Enquiries contact name: Sean & Emma Timmony

Phone and/ or mobile numbers: 0417 272 937- Sean 0412 177 557- Emma

Email Address DunbarsRunAlpacas@gmail.com





SURISSIMO™

Suri fibre unlike any fibre you have experienced before. Bumble Hill Alpacas have spent 12 years improving the fibre genetics of their suri herd to produce suri fleece that is totally processing friendly. It is harvested at the correct length, even in micron, with good curvature and wonderful lustre and handle.

The best suri fleece in the world.

A fully documented mill trial verified our breeding successes **Surissimo** processes perfectly and the resultant fabric is superb.



**Julienne and Frank Gelber
ClairMount**

539 Canobolas Road, Orange NSW 2800

Tel: 02 6365 3669 Email: gelber@bigpond.com

www.bumblehill.com